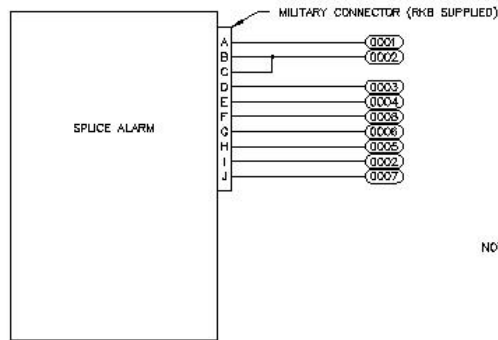


# Equipment Pictorial

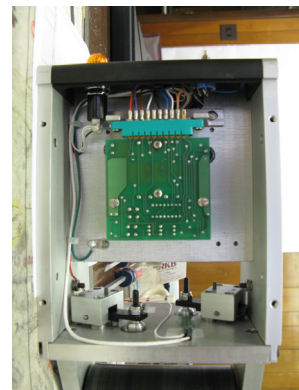
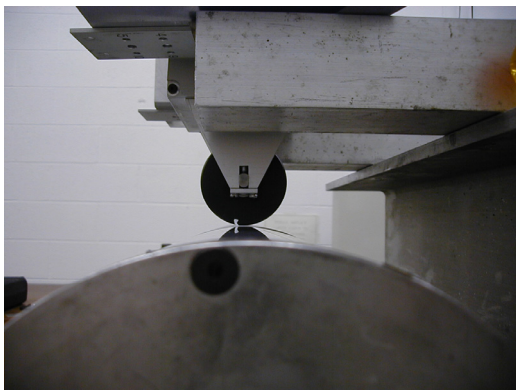
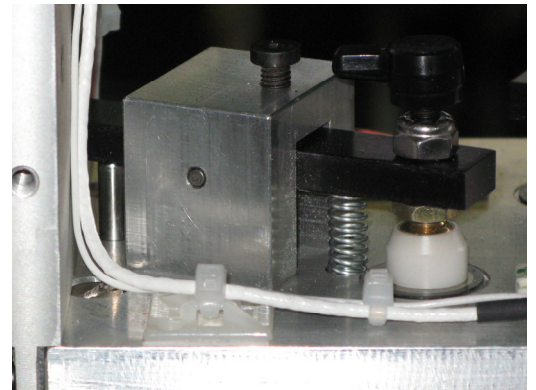
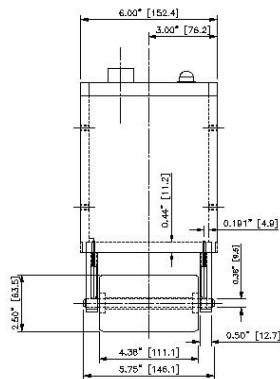
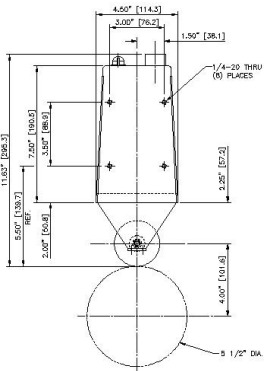
## Model FST1032C



WIRE DATA		
ITEM	DESCRIPTION	WIRE SPECIFICATION
0001	PULSE OUT (+15 VDC)	18 AWG SHIELDED
0002	EARTH GROUND	16 AWG
0003	115 VAC NEUTRAL	16 AWG SHIELDED
0004	220/115 VAC HOT	16 AWG SHIELDED
0005	220 VAC HOT	16 AWG SHIELDED
0006	CONTACT CLOSURE COMMON	16 AWG SHIELDED
0007	CONTACT CLOSURE-NORMALLY OPEN	16 AWG SHIELDED
0008	CONTACT CLOSURE-NORMALLY CLOSED	16 AWG SHIELDED

**NOTES:**

1. ALL WIRE SPECIFIED IN TABLE IS SINGLE QUANTITY.
2. RUN WIRE NUMBERS 0003, 0004, 0005, IN SEPARATE CONDUIT OR WIRE TRAY FROM NUMBERS 0001, 0002, 0006, 0007, 0008.
3. POWER TO SPLICE DETECTOR (110/220 VAC) MUST BE CONDITIONED. (SOLA 63-23-150-B, 110 VAC, 500 VA, 60Hz ONLY RECOMMENDED.) (SOLA 63-23-650-B, 220 VAC, 500 VA, 50Hz ONLY RECOMMENDED.)





1032C @ Alcan Packaging



1032C @ Alcan Packaging



1032C @ Alcan Packaging



1032C @ Bemis Corp



1032C @ Bemis Corp.



1032C @ Bemis Corp.



